



Creation 70

The Reference in LVT

Gerflor[®]

Creation 70 Collection



Creation 70 Clic

- Interlocking
- Clipsable
- Klicksystem



Creation 70 Looselay

- Looselay - Removable
- Plombant - Repositionnable
- Lose Verlegung - Wiederaufnehmbar



Creation 70

- Permanent Adhesive
- Collage Permanent
- Vollflächige Verklebung

DESIGN SHADE VARIATION /
NIVEAU DE CONTRASTE DU DÉCOR /
KONTRASTSTÄRKE DES DESIGNS:



	Code	Dry Back (à coller)	Clic	Looselay	Page
Color Design					
Dock Grey	0085	■	■	■	28
Dock Taupe	0087	■	■	■	28
Gentleman Grey	1058	■	■	■	30
Midwest	0538	■	■	■	14
Moon Island	0358	■	■	■	18
Onka Honey	1054	■	■	■	4
Portobello	0357	■	■	■	23
Pure Concrete Dark	1062	■	■	■	27
Pure Concrete Light	1060	■	■	■	27
Pure Concrete Medium	1061	■	■	■	27
Albion	0577	■	■	■	8
Cervino Oak Beige	0797	■	■	■	9
Cervino Oak Nature	0798	■	■	■	9
Deep Forest	0360	■	■	■	5
Etna Beige	1068	■	■	■	33
Etna Dark	1069	■	■	■	33
Grace Bay Black	1050	■	■	■	19
Grace Bay Cream	1049	■	■	■	19
Muse Sand	1052	■	■	■	12
Muse Smoked	1051	■	■	■	12
Onka Coffee	1057	■	■	■	4
Onka Natural	1055	■	■	■	4
Onka Pearl	1056	■	■	■	4
Oxyd Iron	0089	■	■	■	29
Oxyd Pure	0088	■	■	■	29
Pure Concrete Beige	1063	■	■	■	27
Prado Green	1064	■	■	■	32
Prado Terracotta	1065	■	■	■	32
Secret Garden White	1059	■	■	■	35
Serena	0545	■	■	■	10
Terrazzo Nature	1067	■	■	■	34
Terrazzo Ocre	1066	■	■	■	34
Toasted Wood Ash	1053	■	■	■	3
Toasted Wood Cafe	0799	■	■	■	3
Toasted Wood Roadster	0800	■	■	■	3
Wild Oak	0359	■	■	■	6
Denim Wood	0356	■	■	■	17
Diesel Burnt	1074	■	■	■	7
Diesel Nala	1075	■	■	■	7
Gentleman Garance	1080	■	■	■	30
Gentleman Indigo	1081	■	■	■	30
Gentleman Peppermint	1082	■	■	■	30
Gentleman Taupe	1083	■	■	■	30
Gentleman Tweed	1076	■	■	■	30
Tatami Raffia	1078	■	■	■	31
Tatami Savane	1077	■	■	■	31
Tatami Smoked	1079	■	■	■	31
Carassi	0561	■	■	■	24
Cervino Oak Cold Grey	1187	■	■	■	9
Cervino Oak Honey Clear	1186	■	■	■	9
Clifton	0556	■	■	■	11
Clifton Chesnut	1191	■	■	■	11
Clifton Grey	1192	■	■	■	11
Clifton Honey	1190	■	■	■	11
Douglas	0535	■	■	■	22
East Village	0522	■	■	■	26
Halifax	0531	■	■	■	25
Limed Oak	0329	■	■	■	15
Regimental Picadilly	0807	■	■	■	20
Silversands	0324	■	■	■	13
Solid Glam Picadilly	0803	■	■	■	20
Travertino Beige	1188	■	■	■	16
Travertino Grey	1189	■	■	■	16

■: Available / Disponible / Verfügbar

Toasted Wood



TOASTED WOOD CAFE



TOASTED WOOD CAFE



TOASTED WOOD CAFE 0799
DB 230 x 1500 | CLIC 242 x 1461



TOASTED WOOD ROADSTER 0800
DB 230 x 1500 | CLIC 242 x 1461



TOASTED WOOD ASH 1053
DB 230 x 1500 | CLIC 242 x 1461

DB: Dry Back / A coller / Zum Verkleben
CLIC: Clic
LL: Looselay

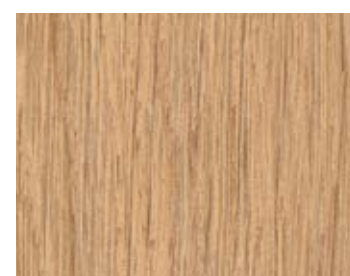
Onka



ONKA COFFEE



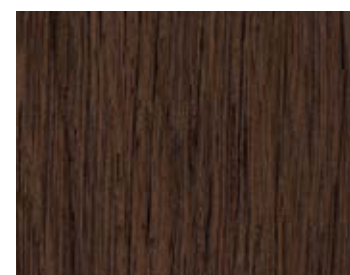
ONKA HONEY 1054
DB 230 x 1500 | CLIC 242 x 1461
LL 229 x 1220



ONKA NATURAL 1055
DB 230 x 1500 | CLIC 242 x 1461



ONKA PEARL 1056
DB 230 x 1500 | CLIC 242 x 1461



ONKA COFFEE 1057
DB 230 x 1500 | CLIC 242 x 1461



DB: Dry Back / A coller / Zum Verkleben
CLIC: Clic
LL: Looselay

Deep Forest



DEEP FOREST



DEEP FOREST



DEEP FOREST 0360
DB 208 x 1243 | CLIC 214 x 1239



Wild Oak



WILD OAK 0359
DB 208 x 1243 | CLIC 214 x 1239

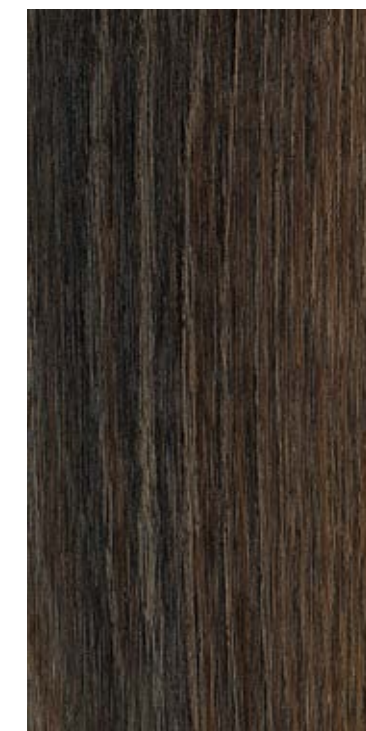


DB: Dry Back / A collar / Zum Verkleben
CLIC: Clic
LL: Looselay

Diesel



DIESEL NALA 1075
DB 230 x 1500 | LL 229 x 1220



DIESEL BURNT 1074
DB 230 x 1500 | LL 229 x 1220



Albion



ALBION



ALBION 0577
DB 208 x 1243 | CLIC 214 x 1239



Cervino Oak



CERVINO OAK HONEY CLEAR



CERVINO OAK HONEY CLEAR



CERVINO OAK BEIGE 0797
DB 230 x 1500 | CLIC 242 x 1461



CERVINO OAK NATURE 0798
DB 230 x 1500 | CLIC 242 x 1461



CERVINO OAK HONEY CLEAR 1186
DB 230 x 1500



CERVINO OAK COLD GREY 1187
DB 230 x 1500

Serena



SERENA



SERENA 0545
DB 208 x 1243 | CLIC 214 x 1239



DB: Dry Back / A collar / Zum Verkleben
CLIC: Clic
LL: Looselay

Clifton



CLIFTON CHESTNUT



CLIFTON CHESTNUT



CLIFTON 0556
DB MIX : 152 x 914 / 76 x 914 / 228 x 914



CLIFTON CHESTNUT 1191
DB MIX : 152 x 914 / 76 x 914 / 228 x 914



CLIFTON HONEY 1190
DB 208 x 1243



CLIFTON GREY 1192
DB 208 x 1243

Muse



MUSE SAND



MUSE SAND 1052
DB 208 x 1243 | CLIC 214 x 1239



MASKING
DESIGN



MUSE SMOCKED 1051
DB 208 x 1243 | CLIC 214 x 1239



DB: Dry Back / A coller / Zum Verkleben
CLIC: Clic
LL: Looselay

Silversands



SILVERSANDS



SILVERSANDS 0324
DB 208 x 1243



Midwest



MIDWEST 0538
DB 208 x 1243 | CLIC 214 x 1239
LL 229 x 1220



Limed Oak



LIMED OAK 0329
DB 208 x 1243



Travertino



MASKING DESIGN

TRAVERTINO BEIGE 1188
DB 228 x 914



MASKING DESIGN

TRAVERTINO GREY 1189
DB 228 x 914



DB: Dry Back / A coller / Zum Verkleben
CLIC: Clic
LL: Looselay

Denim Wood



MASKING DESIGN

DENIM WOOD 0356
DB 208 x 1243 | LL 229 x 1220



Moon Island



MOON ISLAND



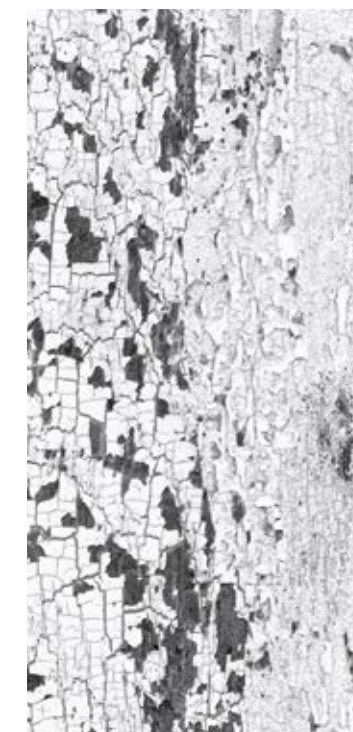
MOON ISLAND 0358
DB 208 x 1243 | CLIC 214 x 1239 | LL 229 x 1220



Grace Bay



GRACE BAY CREAM



GRACE BAY BLACK 1050
DB 208 x 1243 | CLIC 214 x 1239



GRACE BAY CREAM



GRACE BAY CREAM 1049
DB 208 x 1243 | CLIC 214 x 1239

MASKING DESIGN

MASKING DESIGN

Solid Glam Picadilly / Regimental Picadilly



SOLID GLAM PICADILLY



SOLID GLAM PICADILLY 0803
DB 184 x 1219



REGIMENTAL PICADILLY 0807
DB 184 x 1219

MASKING
DESIGN



DB: Dry Back / A collar / Zum Verkleben
CLIC: Clic
LL: Looselay



SOLID GLAM PICADILLY / REGIMENTAL PICADILLY

Douglas



DOUGLAS



MASKING
DESIGN

DOUGLAS 0535
DB 208 x 1243



Portobello



PORTOBELLO

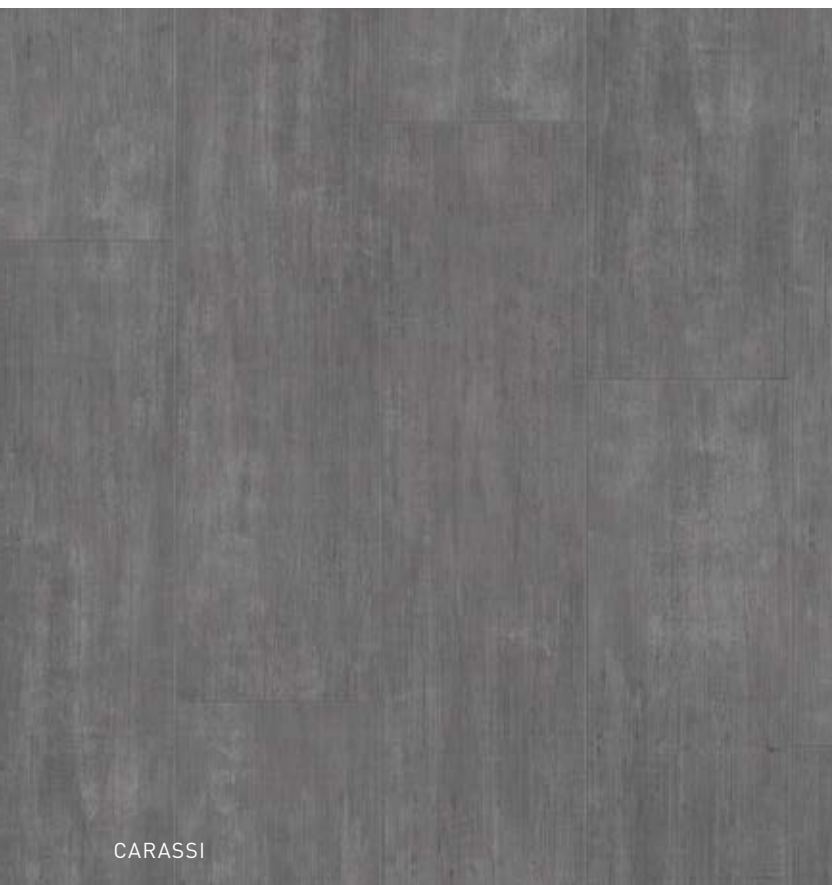


MASKING
DESIGN

PORTOBELLO 0357
DB 208 x 1243 | CLIC 214 x 1239
LL 229 x 1220



Carassi



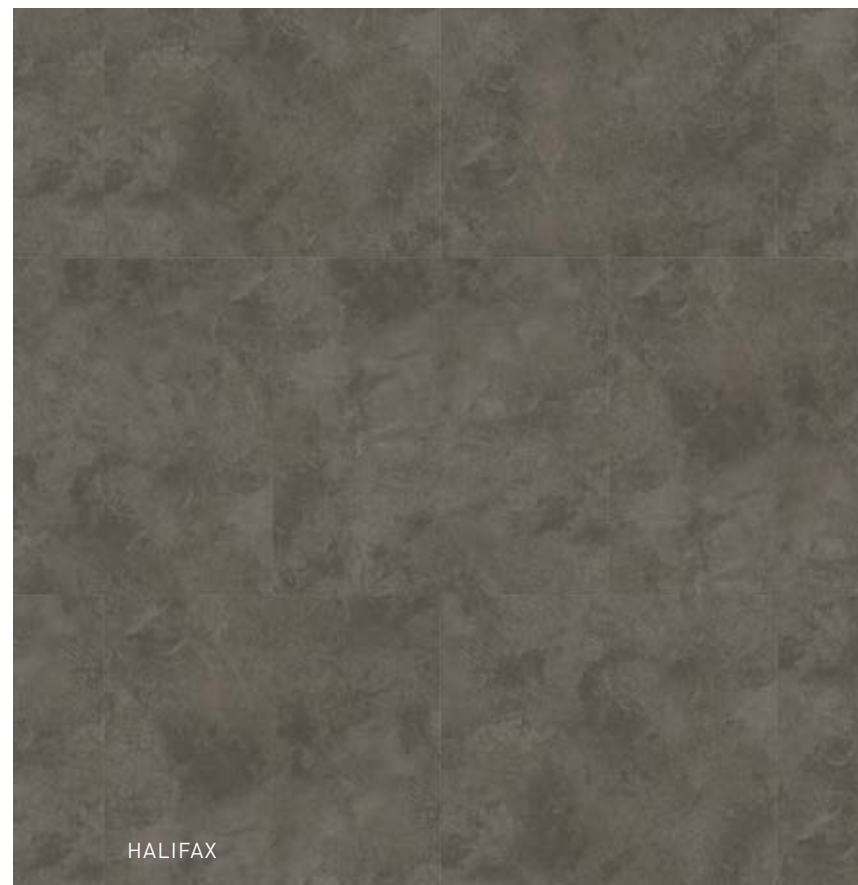
MASKING
DESIGN

CARASSI 0561
DB 228 x 914



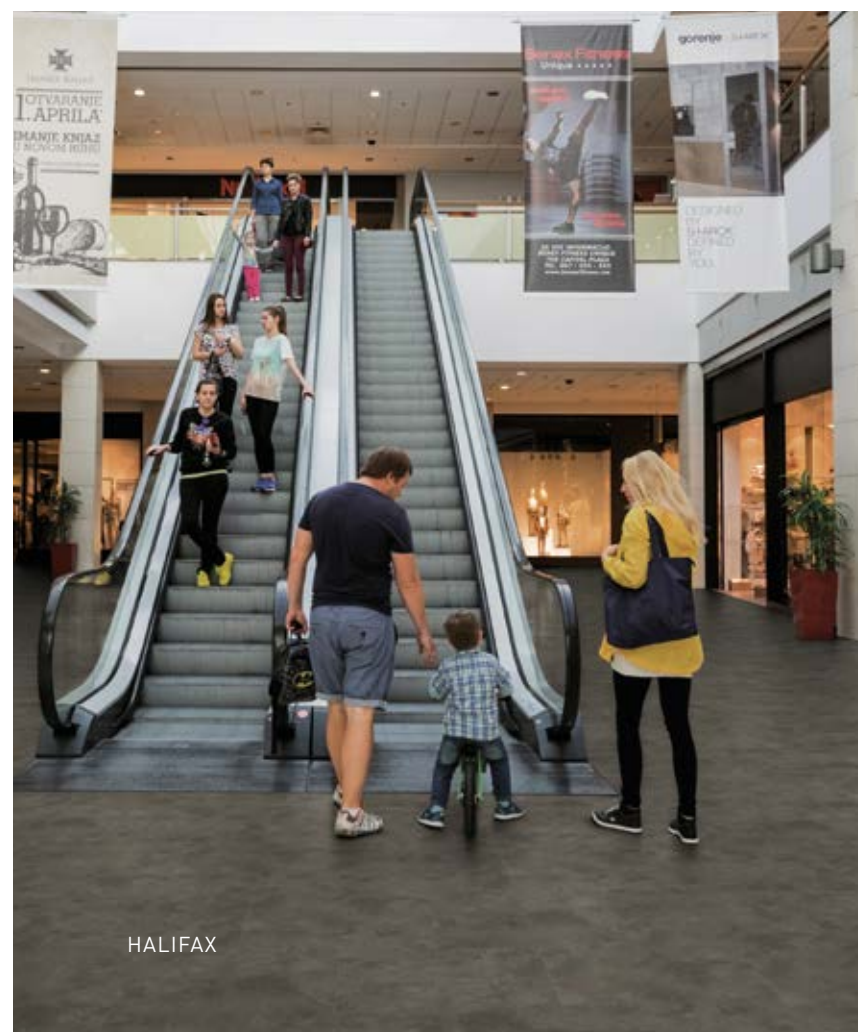
DB: Dry Back / A coller / Zum Verkleben
CLIC: Clic
LL: Looselay

Halifax

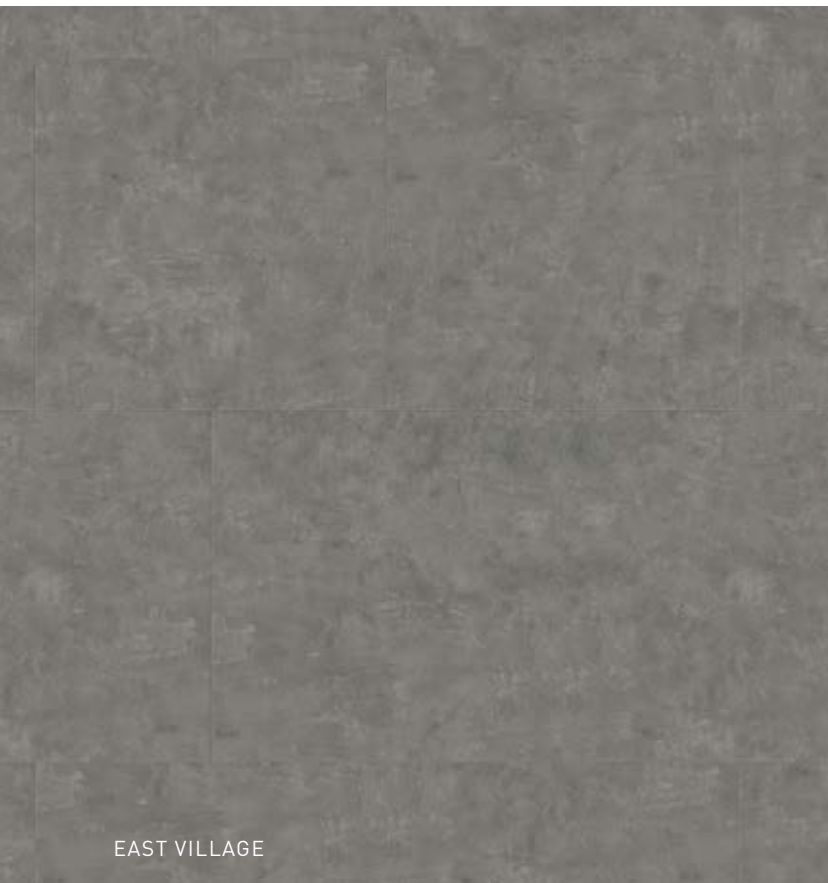


MASKING
DESIGN

HALIFAX 0531
DB 610 x 610



East Village



EAST VILLAGE



MASKING DESIGN

EAST VILLAGE 0522
DB 610 x 610



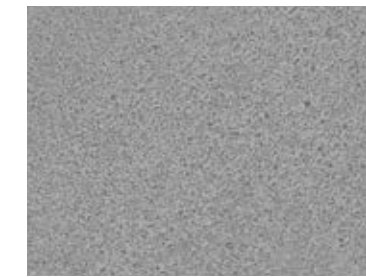
Pure Concrete



PURE CONCRETE MEDIUM



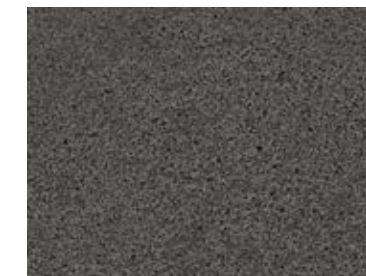
PURE CONCRETE MEDIUM / PURE CONCRETE DARK



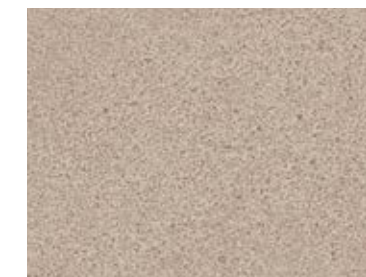
PURE CONCRETE MEDIUM 1061
DB 914 x 914 | CLIC 391 x 729
LL 914 x 914



PURE CONCRETE LIGHT 1060
DB 914 x 914 | CLIC 391 x 729
LL 914 x 914

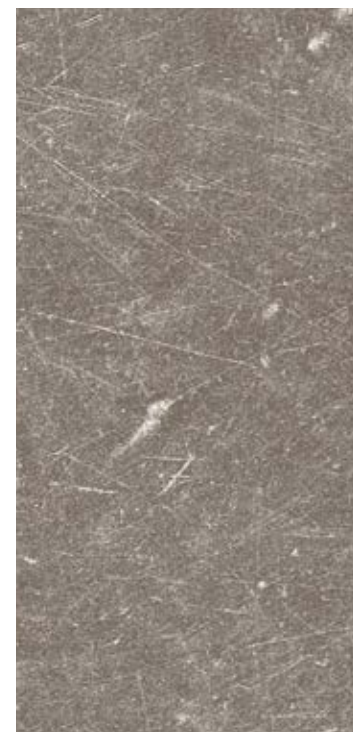


PURE CONCRETE DARK 1062
DB 914 x 914 | CLIC 391 x 729
LL 914 x 914



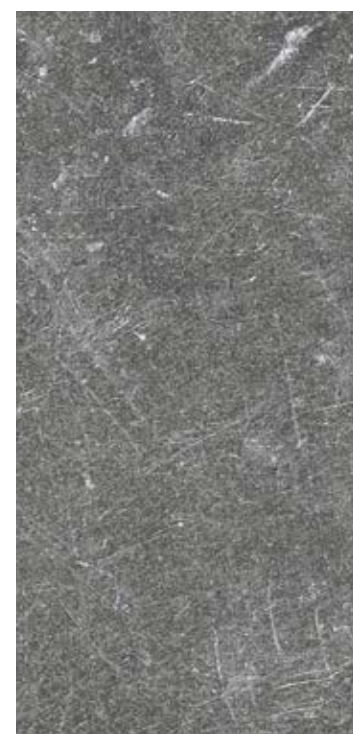
PURE CONCRETE BEIGE 1063
DB 914 x 914 | CLIC 391 x 729

Dock



MASKING DESIGN

DOCK TAUPE 0087
DB 457 x 914 | **CLIC** 391 x 729
LL 914 x 914



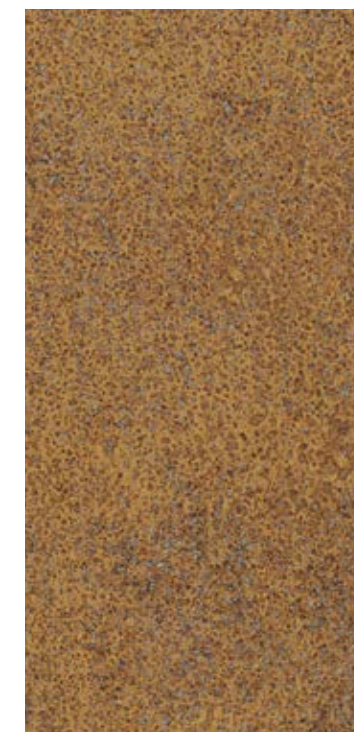
MASKING DESIGN

DOCK GREY 0085
DB 457 x 914 | **CLIC** 391 x 729
LL 914 x 914



DB: Dry Back / A coller / Zum Verkleben
 CLIC: Clic
 LL: Looselay

Oxyd



MASKING DESIGN

OXYD PURE 0088
DB 457 x 914 | **CLIC** 391 x 729



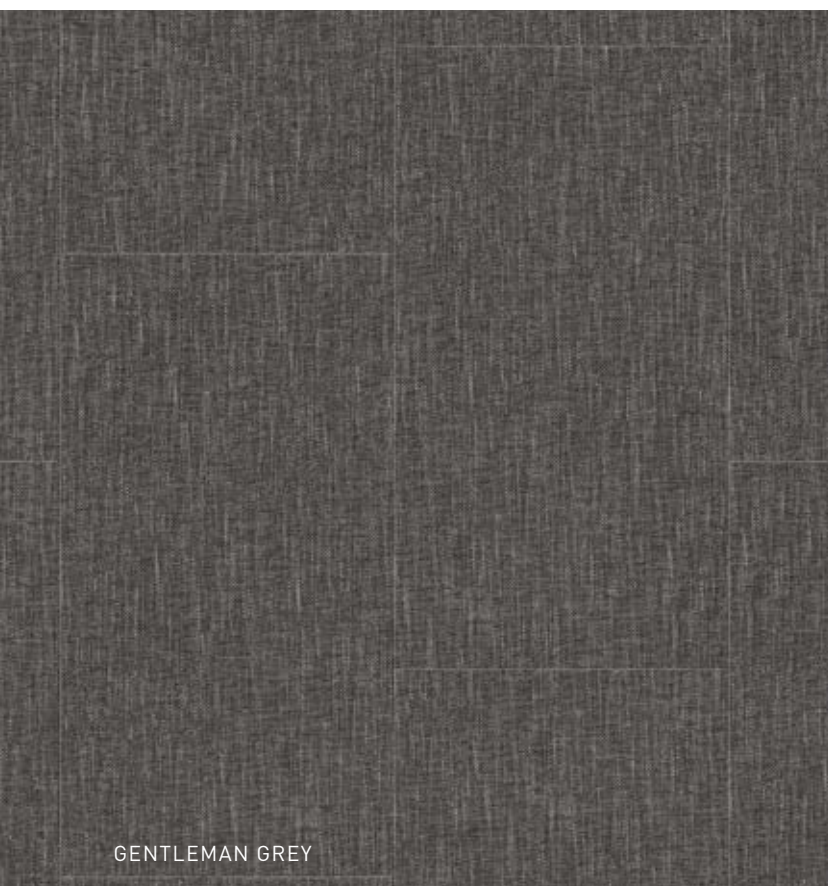
MASKING DESIGN

OXYD IRON 0089
DB 457 x 914 | **CLIC** 391 x 729



OXYD PURE / OXYD IRON

Gentleman



GENTLEMAN GREY



MASKING DESIGN

GENTLEMAN TWEED 1076
DB 228 x 914 | LL 229 x 1220



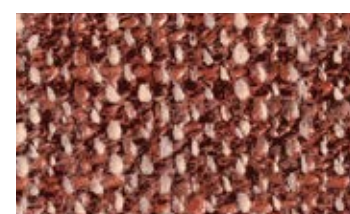
MASKING DESIGN

GENTLEMAN TAUPE 1083
DB 228 x 914 | LL 229 x 1220



MASKING DESIGN

GENTLEMAN GREY 1058
DB 610 x 610 | CLIC 391 x 729 | LL 600 x 600



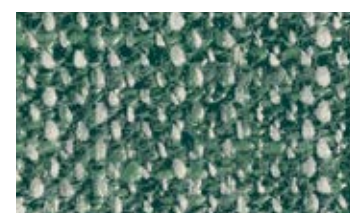
MASKING DESIGN

GENTLEMAN GARANCE 1080
DB 610 x 610 | LL 600 x 600



MASKING DESIGN

GENTLEMAN INDIGO 1081
DB 610 x 610 | LL 600 x 600



MASKING DESIGN

GENTLEMAN PEPPERMINT 1082
DB 610 x 610 | LL 600 x 600

Tatami



TATAMI SAVANE

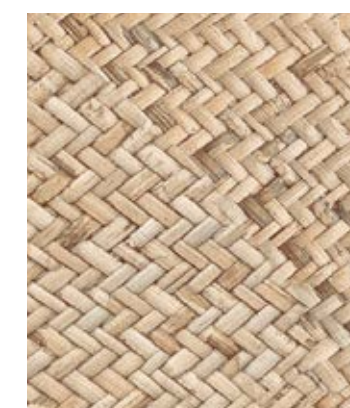


TATAMI SAVANE



MASKING DESIGN

TATAMI RAFFIA 1078
DB 610 x 610 | LL 600 x 600



MASKING DESIGN

TATAMI SAVANE 1077
DB 610 x 610 | LL 600 x 600



MASKING DESIGN

TATAMI SMOKED 1079
DB 610 x 610 | LL 600 x 600

Prado



PRADO GREEN



PRADO TERRACOTTA 1065
DB 457 x 914 | CLIC 391 x 729



PRADO GREEN 1064
DB 457 x 914 | CLIC 391 x 729

DB: Dry Back / A coller / Zum Verkleben
CLIC: Clic
LL: Looselay

MASKING DESIGN



MASKING DESIGN



Etna



ETNA BEIGE



ETNA BEIGE



ETNA BEIGE 1068
DB 457 x 914 / MIX : 152 x 914 / 305 x 914 / 457 x 914 (on demand / sur commande)
CLIC 391 x 729



ETNA DARK 1069
DB 457 x 914 | CLIC 391 x 729

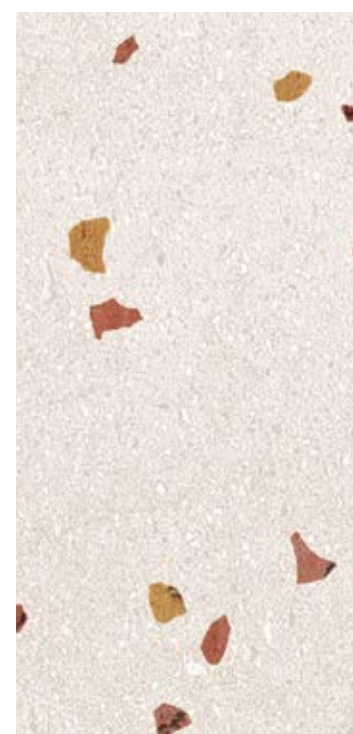
MASKING DESIGN



Terrazzo



TERRAZZO NATURE 1067
DB 914 x 914 |



TERRAZZO OCRE 1066
DB 914 x 914 |



Secret Garden



SECRET GARDEN WHITE 1059
DB 457 x 914 | CLIC 391 x 729



Fabricant Européen de LVT depuis 1985
 European LVT manufacturer since 1985

- 4 sites de production LVT
- Stock en Europe
12 plateformes logistiques
- Direction artistique intégrée
> décors exclusifs
- 4 LVT factories
- Stock in Europe
12 logistics hubs
- Internal Design Center
> exclusive designs

Gerflor The Reference!

PACKAGING

Format (mm)	m ² /box	m ² /palette
Creation 70		
184 x 1219	3,36	215,32
184 x 1219*	3,14	213,53
208 x 1243	3,62	195,46
228 x 914	3,54	212,65
230 x 1500	3,11	204,93
457 x 914	3,76	203,09
610 x 610	3,35	187,54
914 x 914	4,18	204,84
MIX Planks	3,34	213,49
MIX Tiles	3,34	200,58
Creation 70 Clic		
214 x 1239	1,59	85,86
242 x 1461	1,77	84,96
391 x 729	1,43	85,80
Creation 70 Looselay		
229 x 1220	1,67	80,2
600 x 600	1,44	72,0
914 x 914	1,67	80,2

* Regimental Picadilly 0807

More than a floor

Bien plus que du sol

Mehr als nur Bodenbelag

Underlayer / Sous-couche / Dämmunterlagen

Creation 70 Clic

Gerflor Acoustic 15dB



Code: 1798
Format: 1m x 15lm

Gerflor Acoustic Plus 19dB



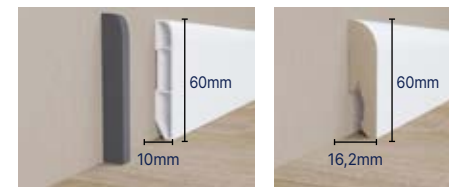
Code: 0704
Format: 0.98m x 15.3lm

Design skirting / Plinthe décor / Sockelleisten



Vinyl Code: 6086 + Color code / MDF Code: 5947 + Color code

White skirting can be painted over / Plinthe blanche à peindre / Weiße Sockelleiste - überstreichbar



Endcap / Embout : 60870001 Vinyl: 6086S001 MDF: 5947S001

Design coverstrip / Profilé multi-fonction décor / Übergangprofil



Code: 0647 + Color code - Format: 45mm x 0.90m
Available colors on gerflor.com / Coloris disponibles sur gerflor.fr /
Verfügbare Designs auf gerflor.de

3 usages



1. **Expansion gap**
Joint dilatation
Dehnungsfuge
2. **Ramp**
Rampe
Rampe
3. **Threshold**
Seuil
Schwelle

Entrance mat / Tapis d'entrée / Sauberlauf

Quickmat Tiles: Pre-adhesived planks (12mm thick) / Lames pré-adhésivées (épaisseur 12mm) /
Quickmat: selbstklebende Fliesen (Aufbauhöhe 12 mm)



Code : 1725, profiles 1726 & angles 1727 - Adapted to 4 to 6mm thick products / Sol de 4 à 6mm d'épaisseur /
Angepasst an Produkte mit 4 - 6 mm Aufbauhöhe



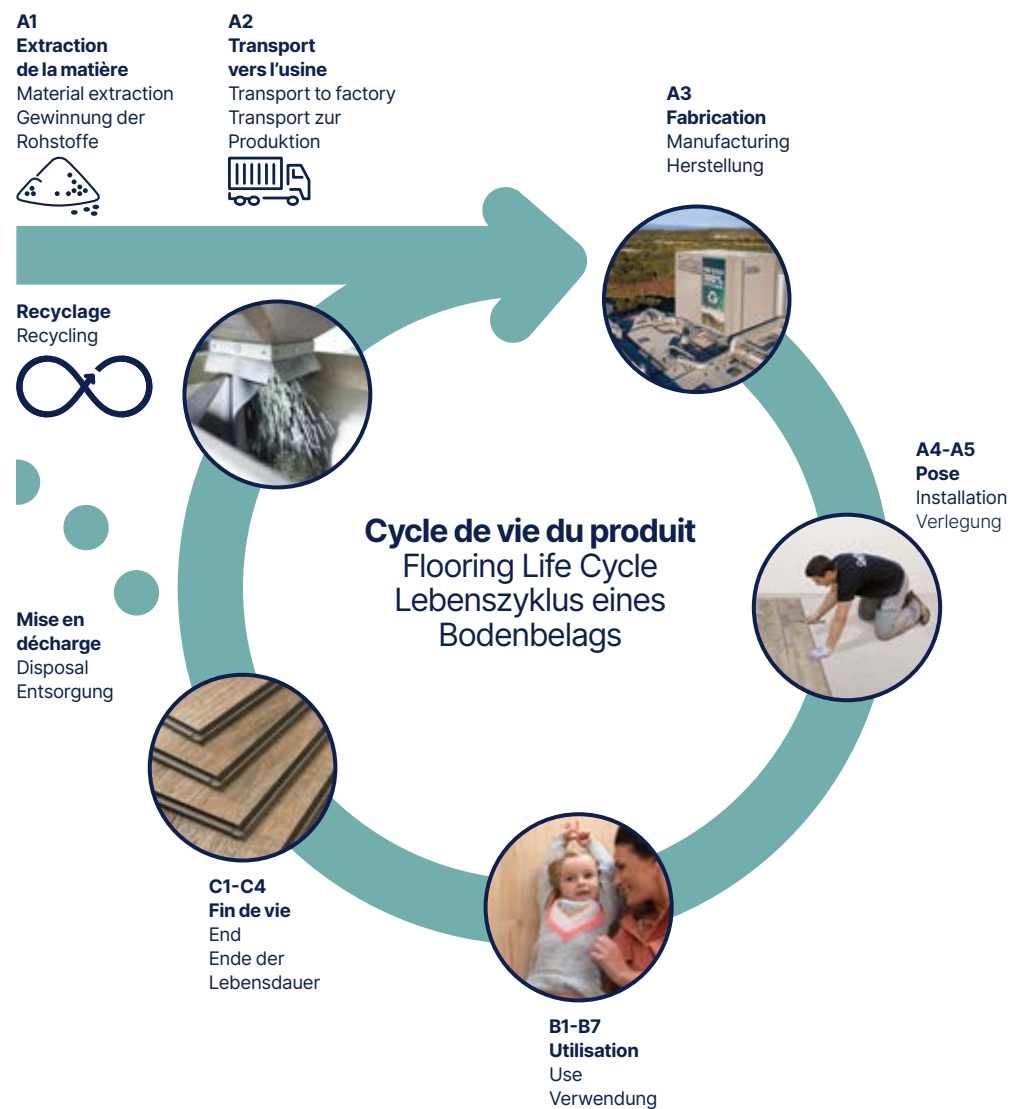
TATAMI SMOKED

Nos engagements pour un développement durable

Our Commitments for a Sustainable future
Unsere Verpflichtung für eine nachhaltige Zukunft

Toutes les gammes de produits Gerflor sont développées selon un modèle d'analyse de cycle de vie

All Gerflor product ranges are developed according to a life cycle analysis model
Mit dem Ziel einer optimalen Ökobilanz werden alle Produkte von Gerflor im Kontext einer systematischen Lebenszyklusanalyse (LCA) entwickelt



Les analyses de cycle de vie certifiées par un laboratoire indépendant sont disponibles dans les fiches de données environnementales et sanitaires (FDES)

Third-party verified life cycle analysis of our products can be found in their Environmental Product Declaration (EPD)

Die Ökobilanzen der Gerflor Produkte werden von unabhängigen Laboren überprüft und in Umwelt-Produktdeklarationen (EPDs) transparent ausgewiesen.

Creation, la référence en développement durable

Creation, the reference in sustainability
Creation, eine Referenz in puncto Nachhaltigkeit



Empreinte carbone

- Présence industrielle en Europe
- Certifications ISO 14001 & 50001
- Énergie renouvelable

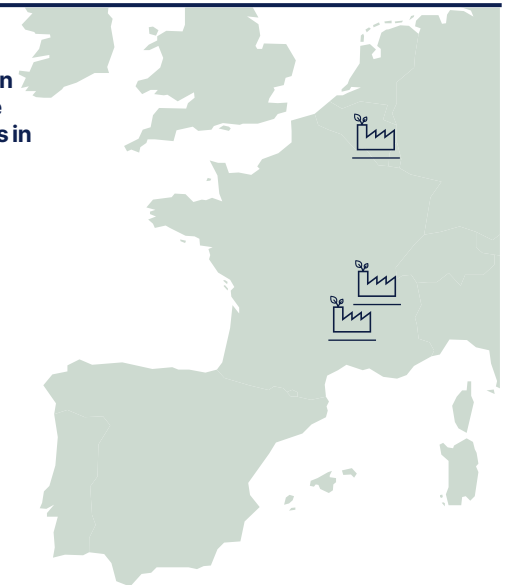
Carbon footprint

- Manufacturing Footprint in Europe
- ISO 14001 & 50001 certifications
- Renewable energy

Reduzierter CO2-Fußabdruck

- Produktionsstandorte in Europa
- Hohe Standards ISO 14001 (Umwelt) und ISO 50001 (Energie)
- Einsatz erneuerbarer Energien

3 sites de production en Europe
3 factories in Europe
Drei LVT Werke in Europa



Économie circulaire

- Produits 100% recyclables
- Fort % de contenu recyclé
- Solutions de pose sans colle
- Packaging carton 100% recyclé

Circularity

- 100% recyclable products
- High % of recycled content
- Adhesive Free solutions
- Packaging using 100% recycled cardboard

Kreislaufwirtschaft

- 100 % recycelbare Produkte
- Hoher Recyclinganteil
- Eigene Recyclingcenter
- Verlegesysteme ohne Klebstoff
- Verpackungen aus 100 % Recyclingpapier



Santé et sécurité

- 100% conforme Reach
- Sans phthalate*
- Sans formaldéhyde
- Qualité de l'air intérieur : TVOC <10 µg/m³ après 28 jours (ISO 16000-6)

Health and safety

- 100% Reach compliant
- Phthalate free*
- Formaldehyde Free
- Indoor Air Quality: TVOC <10 µg/m³ after 28 days

Gesundheit und Sicherheit

- 100 % REACH konform
- Phthalatfrei*
- Formaldehydfrei
- Beste Raumluftqualität: TVOC < 10 µg/m³ (ISO 16000-6)

* Hors contenu recyclé
* Except recycled content
* Ausgenommen Recyclinganteil



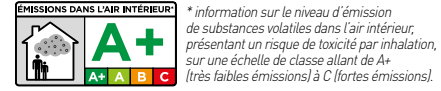
we care / we act

Creation 70

Code	Color Design	Dry Back	Clic	Looselay	Skirting Matching Design	Emboss	NCS	LRV
0085	Dock Grey	457x914	391x729	914x914	S111	HAMMERED	6500-N	20.1
0087	Dock Taupe	457x914	391x729	914x914	S020	HAMMERED	6005-Y50R	19.2
1058	Gentleman Grey	610x610	391x729	600x600	S001	TEXTILE	7500-N	12.7
0538	Midwest	208x1243	214x1239	229x1220	S039	NATURAL	3010-Y30R	38.9
0358	Moon Island	208x1243	214x1239	229x1220	S034	BRUSHED	4010-Y30R	24.8
1054	Onka Honey	230x1500	242x1461	229x1220	S121	NATURAL	4020-Y40R	26.6
0357	Portobello	208x1243	214x1239	229x1220	S053	BRUSHED	5005-Y50R	23.5
1062	Pure Concrete Dark	914x914	391x729	914x914	S001	HAMMERED	7500-N	11.1
1060	Pure Concrete Light	914x914	391x729	914x914	S001	HAMMERED	3500-N	39.1
1061	Pure Concrete Medium	914x914	391x729	914x914	S001	HAMMERED	4502-B	28.4
0577	Albion	208x1243	214x1239	-	S108	NATURAL	4020-Y30R	21.8
0797	Cervino Oak Beige	230x1500	242x1461	-	S011	NATURAL	3010-Y30R	40.1
0798	Cervino Oak Nature	230x1500	242x1461	-	S109	NATURAL	5020-Y20R	28.3
0360	Deep Forest	208x1243	214x1239	-	S110	BRUSHED	6010-Y50R	15.8
1068	Etna Beige	457x914 / MIX 152x914 / 305x914 / 457x914 on demande	391x729	-	S001	HAMMERED	4005-Y80R	36.6
1069	Etna Dark	457x914	391x729	-	S001	HAMMERED	6502-R	12.9
1050	Grace Bay Black	208x1243	214x1239	-	S001	NATURAL	2500-N	32.0
1049	Grace Bay Cream	208x1243	214x1239	-	S001	NATURAL	2005-Y80R	49.1
1052	Muse Sand	208x1243	214x1239	-	S117	NATURAL	3010-Y40R	39.4
1051	Muse Smoked	208x1243	214x1239	-	S118	NATURAL	5005-Y80R	21.3
1057	Onka Coffee	230x1500	242x1461	-	S001	NATURAL	8005-Y80R	7.0
1055	Onka Natural	230x1500	242x1461	-	S122	NATURAL	3020-Y60R	31.1
1056	Onka Pearl	230x1500	242x1461	-	S120	NATURAL	4005-R20B	32.9
0089	Oxyd Iron	457x914	391x729	-	S001	PERFORATED	8000-N	9.4
0088	Oxyd Pure	457x914	391x729	-	S001	PERFORATED	6020-Y30R	17.2
1063	Pure Concrete Beige	914x914	391x729	-	S001	HAMMERED	4005-Y50R	34.3
1064	Prado Green	457x914	391x729	-	S001	STONE	7502-G	12.1
1065	Prado Terracotta	457x914	391x729	-	S001	STONE	4010-Y90R	23.1
1059	Secret Garden White	457x914	391x729	-	S001	STONE	2502-Y	50.2
0545	Serena	208x1243	214x1239	-	S132	NATURAL	6010-Y30R	16.7
1067	Terrazzo Nature	914x914	-	-	S001	STONE	2000-N	64.4
1066	Terrazzo Ocre	914x914	-	-	S001	STONE	2002-Y50R	54.5
1053	Toasted Wood Ash	230x1500	242x1461	-	S001	NATURAL	7502-R	10.6
0799	Toasted Wood Cafe	230x1500	242x1461	-	S001	NATURAL	8010-Y30R	8.4
0800	Toasted Wood Roadster	230x1500	242x1461	-	S001	NATURAL	7010-Y30R	13.6
0359	Wild Oak	208x1243	214x1239	-	S075	BRUSHED	4020-Y30R	26.8
0356	Denim Wood	208x1243	-	229x1220	S026	NATURAL	2502-Y	41.4
1074	Diesel Burnt	230x1500	-	229x1220	S001	NATURAL	8010-Y30R	8.1
1075	Diesel Nala	230x1500	-	229x1220	S001	NATURAL	5020-Y30R	16.7
1080	Gentleman Garance	610x610	-	600x600	S001	TEXTILE	5030-Y90R	13.7
1081	Gentleman Indigo	610x610	-	600x600	S001	TEXTILE	5030-R90B	16.3
1082	Gentleman Peppermint	610x610	-	600x600	S001	TEXTILE	6020-G	16.3
1083	Gentleman Taupe	228x914	-	229x1220	S001	TEXTILE	5502-Y	21.2
1076	Gentleman Tweed	228x914	-	229x1220	S001	TEXTILE	6010-Y50R	16.2
1077	Tatami Savane	610x610	-	600x600	S001	STONE	3010-Y20R	31.6
1079	Tatami Smoked	610x610	-	600x600	S001	STONE	7005-Y20R	12.2
1078	Tatami Raffia	610x610	-	600x600	S001	STONE	4020-Y30R	24.4
0561	Carassi	228x914	-	-	S001	RIB WOOD	5502-G	21.7
1187	Cervino Oak Cold Grey	230x1500	-	-	S001	NATURAL	3502-R	33.8
1186	Cervino Oak Honey Clear	230x1500	-	-	S001	NATURAL	4020-Y30R	27.6
0556	Clifton	Mix 152 X914 / 76x914 / 228x914	-	-	S144	NATURAL	5010-Y10R	23.2
1191	Clifton Chesnut	Mix 152 X914 / 76x914 / 228x914	-	-	S001	NATURAL	4020-Y40R	25.2
1192	Clifton Grey	208x1243	-	-	S001	NATURAL	3005-R20B	45.7
1190	Clifton Honey	208x1243	-	-	S001	NATURAL	4020-Y40R	24.2
0535	Douglas	208x1243	-	-	S001	NATURAL	4005-Y50R	29.1
0522	East Village	610x610	-	-	S154	STONE	4502-G	22.0
0531	Halifax	610x610	-	-	S032	STONE	6502-Y	16.7
0329	Limed Oak	208x1243	-	-	S147	NATURAL	2010-Y20R	42.0
0807	Regimental Picadilly	184x1219	-	-	S001	NATURAL	4005-Y20R	20.6
0324	Silversands	208x1243	-	-	S146	NATURAL	3010-Y20R	33.1
0803	Solid Glam Picadilly	184x1219	-	-	S001	NATURAL	5005-Y20R	27.8
1188	Travertino Beige	228x914	-	-	S001	STONE	3005-Y80R	46.9
1189	Travertino Grey	228x914	-	-	S001	STONE	3502-R	36.7
1089	Dalma Burgundy	-	-	-	S001	HAMMERED	6005-Y80R	24.7
1088	Dalma Grey	-	-	-	S001	HAMMERED	7005-R80B	19
0062	Rough Textile Beige	-	-	-	S001	TEXTILE	5005-Y20R	25.4
0063	Rough Textile Grey	-	-	-	S001	TEXTILE	5500-N	21.1

S001: White / blanc / weiß

Creation 70



CREATION 70	CREATION 70 LOOSELAY	CREATION 70 CLIC
CREATION 70 DESIGN	CREATION 70	

DESCRIPTION / BESCHREIBUNG / BESCHRIJVING / DESCRIPTION / DESCRIPCIÓN / DESCRIÇÃO / DESCRIZIONE

Total Thickness / Gesamtdicke / Totale dikte / Épaisseur totale / Espesor total / Espessura total / Spessore totale	EN ISO 24346	mm	2.50	2.50	6.00	6.00
Thickness of the wearlayer / Dicke der Nutzschicht / Dikte van de slijtlaag / Épaisseur couche d'usure / Espesor capa de uso / Espessura camada de desgaste / Spessore strato di usura	EN ISO 24340	mm	0.70	0.70	0.70	0.70
Weight / Flächengewicht / Gewicht / Poids / Peso / Peso	EN ISO 23997	g/m²	4100	3960	10000	9850
Size / Format / Afmetingen / Format / Dimensiones / Dimensões / Dimensioe	ISO 24342	mm	184x1219	230x1500	Mix planks 76/152/228 x914	610x610
	ASTM F 536	inch	7.25" x48"	9" x59"	3" / 6" / 9" x36"	24" x24"
Number of planks / tiles per box	-	-	14 ¹⁰ / 15	9	8+8	9
				5	9	17
					4+4	14
						6 / 4 / 2
						6 / 5 / 5

CLASSIFICATION / KLASSIFIKATION / CLASSIFICATIE / CLASSIFICATION / CLASIFICACIONES / CLASSIFICAÇÕES / CLASSIFICAZIONI

Norm/Product Specification / Produktnorm / Technische eigenschappen / Norme/Spécification produit / Normas / Normas / Norma prodotto	-	-	EN ISO 10582	EN ISO 10582	EN ISO 10582
European Classification / Europäische Klassifizierung / Europese classificatie / Clasement européen / Classificação europea / Classificação Europeia / Europea	EN ISO 10874	Class	34 - 43	34 - 43	34 - 43

Classement UPEC	-	-	U4P3E2C2	U4P3E1/2C2	Pour pose dans les locaux classés U4P3E1/2C2
-----------------	---	---	----------	------------	--

Certification UPEC (evaluation.cstb.fr)	QB 30	n°	783/356-001.1	302-001-1	-
---	-------	----	---------------	-----------	---

Avis Technique	-	n° AT.	-	-	12/19-1786_V2
----------------	---	--------	---	---	---------------

Fire Rating / Brandverhalten / Brand classificatie / Clasement Feu / Fuego / Fogo / Reazione al fuoco	EN 13 501-1	Class	Bfl-s1	Bfl-s1	Bfl-s1
---	-------------	-------	--------	--------	--------

Static Electrical Propensity / Begehaufladung / Elektrische eigenschappen / Potentiel de charge / Comportamiento electrostático / Comportamento electrostático / Resistenza elettrica	EN 1815	kV	< 2	< 2	< 2
---	---------	----	-----	-----	-----

Slip Resistance Wet / Rutschhemmung / Anti-slip / Glissance humide / Deslizamiento húmedo / Escorregamento húmido / Scivolosità umida	EN 16165:2021 Appendix B (DIN 51130)	Class	R10	R10	R10
---	--------------------------------------	-------	-----	-----	-----

PERFORMANCES / TECHNISCHE EIGENSCHAFTEN / TESTRESULTAAT / PERFORMANCE / CUALIDADES TÉCNICAS / PERFORMANCES / CARATTERISTICHE TECNICHE

Wear Resistance / Verschleißverhalten / Slijtvastheid / Résistance à l'usure / Abrasion / Abrasão / Resistenza all'abrasione	EN 660.2	mm²	< 2.0	< 2.0	< 2.0
--	----------	-----	-------	-------	-------

Wear Group / Verschleißgruppe / Groep slijtvastheid / Groupe d'abrasion / Grupo de abrasión / Grupo de abrasão / Gruppo di abrasione	QB 30	group	T	T	T
--	-------	-------	---	---	---

Type Binder content / Bindemittelgehalt / Teneur en agent liant / Contenido en ligante / Conteúdo em ligante	ISO 10582	group	I	I	I
--	-----------	-------	---	---	---

Dimensional stability (norm) / Maßstabilität (norm) / Maatvastheid (norm) / Stabilité dimensionnelle (norme) / Estabilidad Dimensional (Exigencia) / Estabilidade dimensional (normalização) / Stabilità dimensionale (requisito normativo)	EN ISO 23999	%	€ 0.25	€ 0.15	€ 0.15
---	--------------	---	--------	--------	--------

Dimensional stability (average measured value) / Maßstabilität (Durchschnittswert) / Stabilité dimensionnelle (valeur moyenne mesurée) / Maatvastheid (gemeten gemiddelde waarde) / Estabilidad Dimensional (Valor medido) / Estabilidade Dimensional (Valor medido) / Stabilità dimensionale (rilevata)	-	%	€ 0.10	€ 0.05	€ 0.05
--	---	---	--------	--------	--------

Residual Indentation / Resteindruck / Indrukbelasting / Poinçonnement statique rémanent / Punzonamiento / Punçoamento / Impronta	EN ISO 24343-1	mm	€ 0.10	€ 0.10	€ 0.10
--	----------------	----	--------	--------	--------

Impact sound insulation / Trittschallverbesserungsmaß / Geluidsisolatie / Isolation acoustique bruits de chocs / Acústica / Isolamento acústico	EN ISO 717-2	dB	4	9	4
---	--------------	----	---	---	---

Room Impact / Raumschall / Looppeluid / Sonorité à la marche / Rumore al calpestio / Sonoridad en la pisada / Sonoridade ao andar	NF S 31074	dB	76	73	78
---	------------	----	----	----	----

Castor chair test / Stuhlrollenbeanspruchung / Rolweerstand bureaustoelen / Essai de la chaise à roulettes / Determinación del efecto de una silla con ruedas / Resistência a cadeiras de rodas / Resistenza al passaggio di sed (Type H)	ISO 4918	-	OK	OK	OK
---	----------	---	----	----	----

Thermal Conductivity / Wärmeleitfähigkeit / Thermische weerstand / Conductivité thermique / Conductividad térmica / Contutividade térmica / Resistenza termica / Värmeledningsmotstånd / Varmemotstånd	EN ISO 10456	W/(m.K)	0.25	0.25	0.25
--	--------------	---------	------	------	------

Colour Fastness / Lichtechtheit / Lichtecheit / Solidité lumière / Resistencia a la luz / Estabilidade das cores / Solidità alla luce	EN 20 105 - B02	degree	≥ 6	≥ 6	≥ 6
---	-----------------	--------	-----	-----	-----

Surface Treatment / Oberflächenvergütung / Oppervlaktebehandling / Traitement de surface / Tratamiento de superficie / Tratamento de superficie / Trattamento di superficie	-	-	PUR+ Matt	PUR+ Matt	PUR+ Matt
---	---	---	-----------	-----------	-----------

Chemical Products Resistance / Verhalten gegenüber Chemikalien / Chimische bestandigheid / Resistencia aux produits chimiques / Resistencia a los productos quimicos / Resistência aos produtos quimicos / Resistenza ai prodotti chimici	EN ISO 26987	-	OK	OK	OK
---	--------------	---	----	----	----

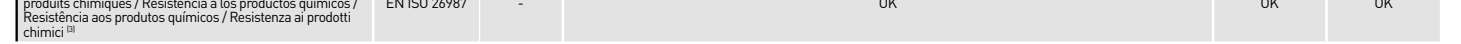
ENVIRONMENT/INDOOR AIR QUALITY / UMWELT/RAUMLUFTQUALITÄT / ENVIRONNEMENT/QUALITE DE L'AIR INTERIEUR / MEDIO AMBIENTE/CALIDAD INTERIOR DEL AIRE INTERIOR / MEIO AMBIENTE/QUALIDADE DO AR INTERIOR

TVOC after 28 days / TVOC (28 Tage) / TVOC (28 dagen) / TVOC après 28 jours / TVOC (28 dias) / TVOC (28 giorni) / TVOC (28 dagar) / TVOC (28 dager)	ISO 16000-6	micrograms/m³	< 10	< 10	< 10
---	-------------	---------------	------	------	------

Certification / Zeugnis / Certification / Certificado / Certificação	-	-	Floorscore®	-	Floorscore®
--	---	---	-------------	---	-------------

CE MARKING / CE KENNZEICHNUNG / EG_CONFORMITEITSMERK / MARQUAGE CE / MARCA DE CONFORMIDAD CE / MARCA DE CONFORMIDADE CE / MARCATURA CE DI CONFORMITA

CE	EN 14041	-			
----	----------	---	--	--	--



(1) Regimental Picadilly 0807
 (2) Ramp test with oil / Schiefe Ebene / Plan incliné avec huile
 (3) Beständig gegenüber nicht färbenden alkoholhaltigen Handdesinfektionsmitteln, Haushaltschemikalien und verdünnten Säuren und Laugen bei kurzzeitiger Einwirkung.

IMPORTANT: The information contained in this document is valid from 01/10/2022 and is subject to change at any time without notice. In the context of constantly changing technology, our customers are responsible, prior to any use, for checking with us that this document is the version in force.

France: Gerflor - Service Express:



gerflor.com / follow us



e-mail: contactfrance@gerflor.com

Other countries: Gerflor International

Tel: +33 (0)4 74 05 40 00

Fax: +33 (0)4 74 05 03 13

e-mail: gerflorcontract@gerflor.com

RC Lyon B 726-580 152 - JPE - 11/2023 - Z0045539 - Prix indicatif documentation : 1.50€

We care / We act Our commitments for a sustainable future



CARBON FOOTPRINT*
-20 % kg CO₂ equivalent/m² between 2020 and 2025



BIOSOURCED CONTENT**
10 % by 2025



RECYCLED CONTENT
30 % by 2025



ADHESIVE FREE***
35 % by 2025



ANNUAL VOLUME RECYCLED
60 000 t by 2025



* Scopes 1 and 2 defined in the GHG protocol ** % of activity with biosourced materials *** % of activity - adhesive free solution